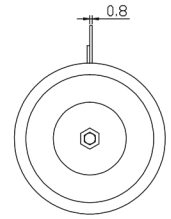
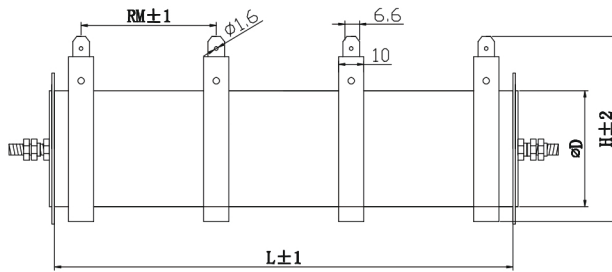


RXG30 功率型被漆分段式线绕电阻器 300W-350W

RXG30 Power Pinned Tapped Tubular Wire Wound Resistors 300W-350W



产品特点 Features

- 高温负荷特性优良
Excellent high temperature load performance
- 功率范围较宽 Widepower range
- 高过载能力 High over loading ability
- 可提供安装套件(选购件)
Assemblly and fittings (available)

应用范围 Applications

- 电力分配, 负荷测试
Electric power distribution,load test
- 适用于功率电源
Applied for functional power supply
- 变频电源等领域
Variable frequency power source etc
- 用于工控的伺服系统中软启动和制动部分
Applied to the soft starting and breaking parts of industrial controlled servo drive system

主要性能技术指标 Main specification

型号 Type	功率 Power (W)	阻值范围 Resistance Range	阻值精度 Tolerances Range	外形尺寸 Dimensions (mm)			
				L	D	H	RM
RXG30	300	1-10K	± 2% (G) ± 5% (J)	182	45	75	53.5
	350	1-10K		180	68	97	47.5

订货示例 How to order

产品型号 Type	功率 Power	标称阻值 Nominal value	精度 Tolerance
RXG30	350W	1K5*3	± 5%